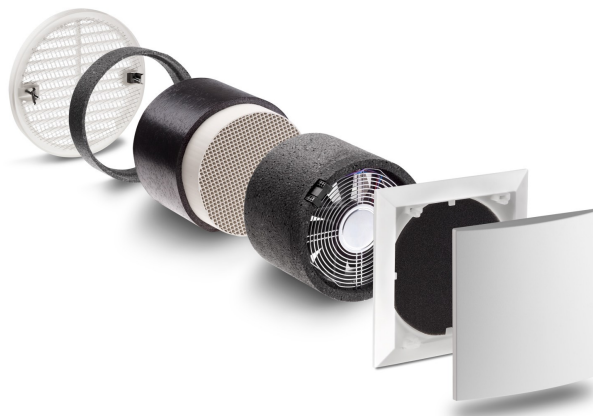


Decentralized ventilation system with built-in regenerative heat recovery core

Dimensions	
Diameter unit	5-7/8" – 150mm
Diameter core	6-3/16" – 160mm
Minimum wall thickness	12" – 300 mm
Installation tube (can be cut)	6"-3/18 to 19-1/2" - 160 to 500 mm
Inside cover	7-1/16" x 7-1/16" – 180 x 180 mm
Outside grill diameter	7-1/16" – 180 or LUNOthern transferbox

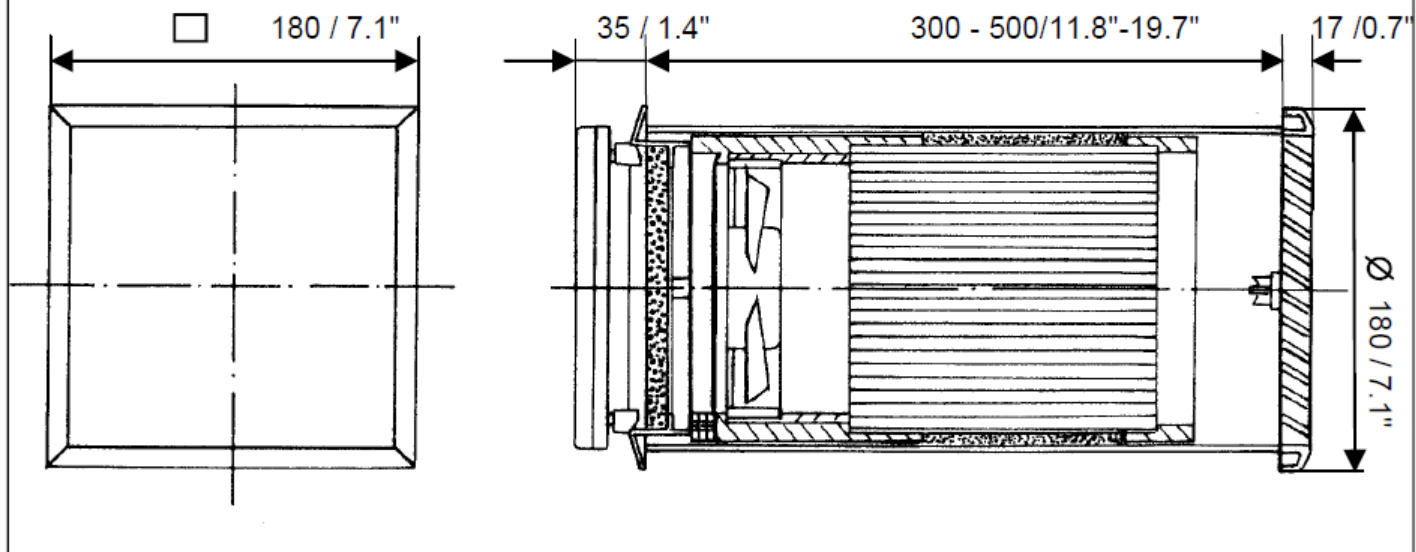
Operating and wired in groups of 2 or 4, these fans provide continuous ventilation without the need for ductwork - installed directly in the exterior wall. The regenerative core is charged every 70 seconds, after which the fan reverses and the incoming air absorbs the stored heat on its way in.

Technical Specs	
Heat recovery efficiency	90.6%
Humidity recovery	20-30%
Flow rates	17/32/38 m ³ /hr 10/18/22 CFM
Operating noise	16.5 dB at 17 m ³ /hr (10CFM) 19dB at 32 m ³ /hr (18 CFM) 26dB at 38 m ³ /hr (22CFM)
Power consumption Fan <0.1amp	1.4 W (17 m ³ /hr) 2.8 W (32 m ³ /hr)
Fan efficiency	0.09 Wh/m ³
Filter	G3 or Pollen (F5)

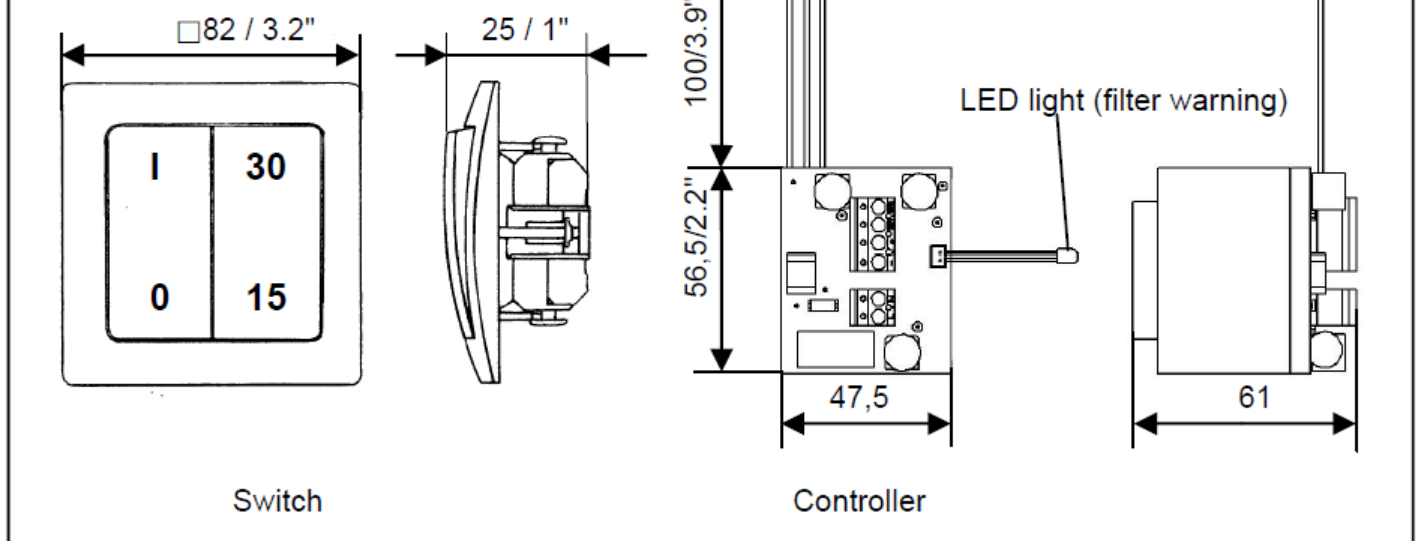


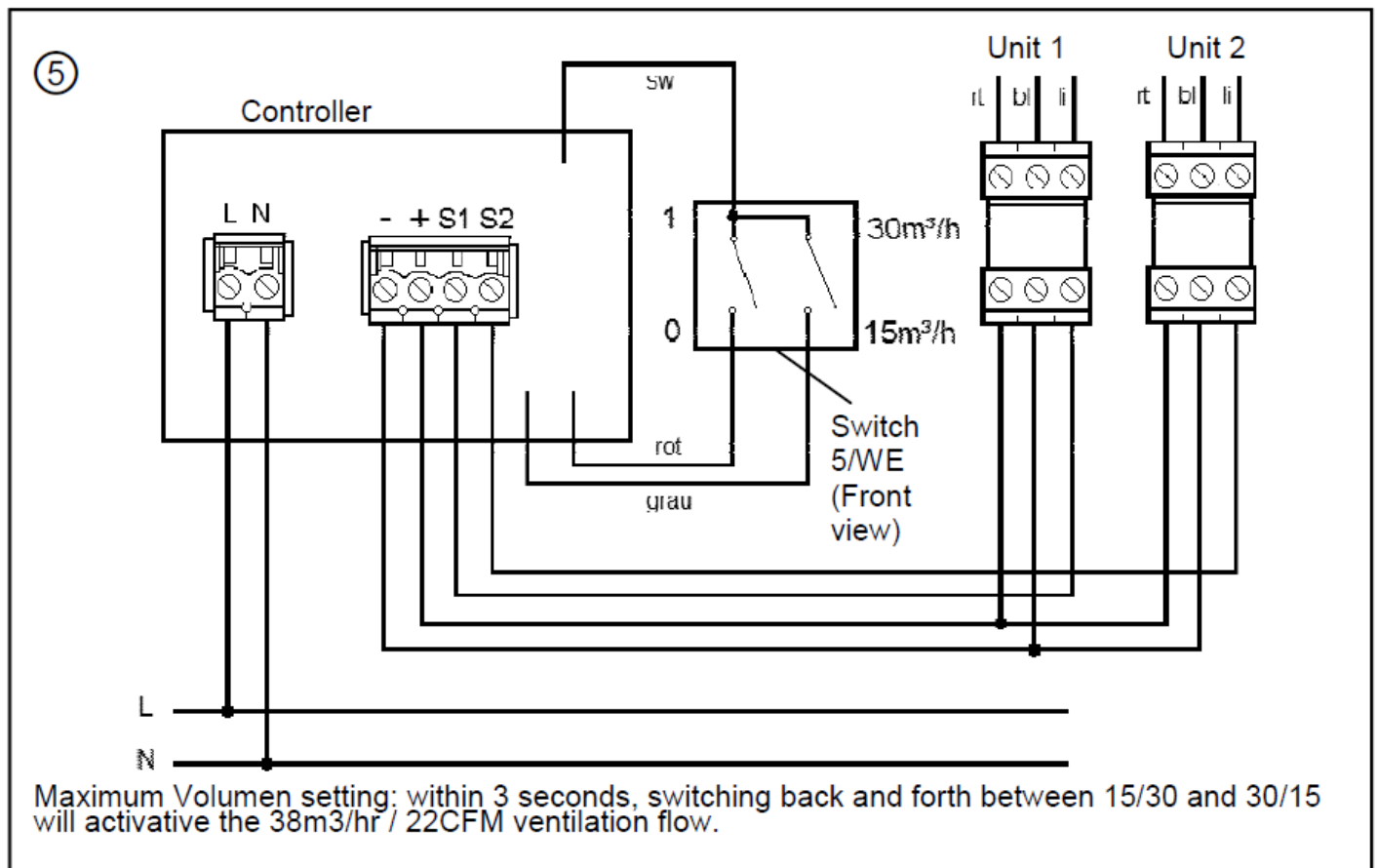
Dimensions (mm and inches)

e² heat recovery ventilator



Switch and controller





Basic fans assembly (039846) includes:

- Ceramic regenerative heat exchange core
- EPP- insulation rings
- 12V – reversing fan
- Installation Tube
- G3 Filter
- White Interior cover
- White Exterior grill, with insect screen

Accessories:

- Switch for up to four e²'s (TYP 5/SE), includes filter indicator and installation box.
- Serial switch 5/WE
- Exterior noise attenuator 9/SW
- Washable replacement filters (3 pack), G3 9/FIB-3R
- Pollenfilter F5 (3 pack) – 9/FIB-P
- Grey and red-brown exterior grills (1/GE180 and 1/RE180)
- LUNOtherm tranferbox for hidden ventilation opening under/next to windows

Four Seven Five
High Performance Building Supply
131 Union St. Brooklyn, NY 11231
info@foursevenfive.com
718-622-1600

